



THE SOUTHEAST FLORIDA ASSOCIATION FOR PSYCHOANALYTIC PSYCHOLOGY

A LOCAL CHAPTER OF DIVISION 39 (PSYCHOANALYSIS) OF THE AMERICAN PSYCHOLOGICAL ASSOCIATION

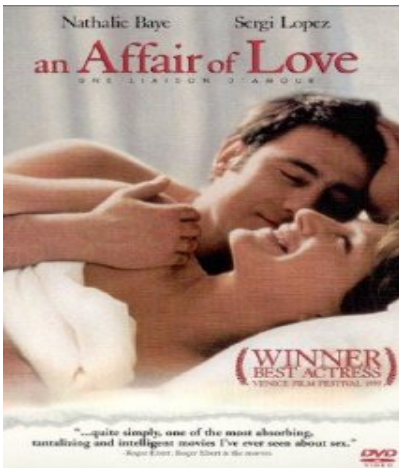
YOU ARE CORDIALLY INVITED TO ATTEND OUR UPCOMING SPECIAL SYMPOSIUM:

Attachment, Perversion, Play and Involvement: Film Screening and Discussion of “An Affair of Love”

PRESENTED BY ALBERT J. BROK, PH.D., CGP AND ELLEN GUSSAROFF, PH.D.

WHEN: SUNDAY, DECEMBER 7TH, 2014
TIME: 9:00 am to 12:30pm, followed by brunch
(registration begins at 8:45am)
WHERE: Imperial Point Medical Center
6401 North Federal Highway
Fort Lauderdale, FL 33308

PRESENTATION DESCRIPTION: (INSTRUCTIONAL LEVEL: INTERMEDIATE)



Early in the twentieth Century, Freud noted that a major issue confronting mature relationships involved the integration of passion and tenderness toward the same person. This is a theme that was not only relevant in Freud's time, it is also of current importance in a culture that consciously values marriage but is increasingly tilting toward identification with the bifurcation of desire and love. In our 21st Century Western Culture, goals and desires of individuals often clash with the goals and desires of the couples these individuals form. Boredom and complacency characterize many long-term relationships while enduring relationships (with involvement compromised of love, desire, play and imagination) are thought by some to be impossible. While individuals seeking a relationship, are often lacking or unaware of the emotional tools necessary to form an ongoing relationship. Many are organized by what the speakers have termed malignant individualism as opposed to benign individualism. This program explores this general set of issues from a number of perspectives highlighted by the film “An Affair of Love” award winner for best actress (Nathalie Baye) at the Venice film festival 1999. It is in French with English Subtitles.

PRESENTERS:

Albert J. Brok, Ph.D. is past -President, Section I Div 39, of the American Psychological Association (2012 -2013), a member of the faculty at Derner Institute, Adelphi University and Director Group and Couples Training, Training Institute of Mental Health, New York. He is also a member and ongoing presenter with the Cineanalises (film and analysis) Group, and the Argentine Psychoanalytic Association in Buenos Aires,

Argentina. He belongs to various international organizations and is Visiting Faculty, Kazakhstan Psychoanalytic Assoc. Almaty, Kazakhstan, and Guest Presenter at the Madrid Psychoanalytic Association (APM). He is bilingual in Spanish and English. Dr. Brok has co-authored three books on three distinct topics: aging, cinema and cultural identity, and combines individual and psychoanalytic group therapy. He has also presented and published numerous articles on such issues as Disavowal versus Denial, Internalization of Cultural Norms, Issues of identification, and many other topics in the general analytic field.

Ellen Gussaroff, LCSW, Ph.D. is the Co-Director of the Couple Therapy Program, a Training Analyst, and Senior Supervisor at the Training Institute For Mental Health in New York. She was the Co-Director of the Introductory Psychoanalytic Psychotherapy Training Program and the Senior Supervisor and Training Analyst at the Postgraduate Center for Mental Health. She was also Adjunct Associate Professor at Fordham University's Graduate School of Social Work. She maintains a full time private practice as a Psychoanalyst and Psychotherapist, working with individuals, couples and families. Her recent presentations include, "Identification Fragmentation in the Case of a Self Mutilating Patient," "Transference Enactments in the Paradox of Silence or Always the Audience, Never the Show," presented in Norway, 2002, at the IFPS FORUM, and "Child Depression and The Silent Mother" at the International Psychoanalytic Association in Prague, Czech Republic.

OBJECTIVES:

After attending this intermediate-level program in full, participants will be able to address such questions as:

- (1) How can one differentiate attachment from involvement?
- (2) What is the role of perversion in stifling play?
- (3) Can fantasy and reality interpenetrate a couple rather than be neutralized by them? Can a relationship become a play space as well as a workspace? And how is that different from a "Perverse" space?
- (4) Can one completely know one's partner, or is this a myth that allows us to avoid the gap of desire and hide behind the safety of "knowing."
- (5) And finally, are current Western relationship values the products of a culture buttressing narcissistic interests, media addiction and disbelief in the work of involvement?

LOCATION AND DIRECTIONS:

DIRECTIONS: From 1-95 take the Cypress Creek Road Exit, Exit 33 (east) until you reach Federal Highway (US1). Turn left (north). The hospital is located approximately 1/4 mile on the left (west) side of the road.

CONTINUING EDUCATION CREDITS:

SEFAPP is an approved continuing education provider by the Agency for Health Care Administration of the Florida Board of Clinical Social Work, Marriage and Family Therapy and Mental Health Counseling (BAP #587 EXP. 3/2015). **This program, when attended in its entirety, is offered for 3 CE credits.** Division 39 is approved by the American Psychological Association to sponsor continuing education for psychologists. Division 39 maintains responsibility for this program and its content. Division 39 is committed to accessibility and non-discrimination in its continuing education activities. SEFAPP and Division 39 are committed to conducting all activities in conformity with the American Psychological Association's Ethical Principles for Psychologists. Participants are asked to be aware of the need for privacy and confidentiality throughout the program. If participants have special needs, we will attempt to accommodate them. Please address questions, concerns and any complaints to Lisa Schulman, Ph.D. at (561) 622-7722.

The risks, utility and limitations of this treatment will be covered during the talk. The presenters are not receiving commercial support, nor representing any commercial interest or recommending any commercial product in relation to their presentation.

REGISTRATION: (see fees at bottom of page)

- To pay by check or cash, RSVP by 12/5/14 at office@sefapp.org and pay at the door.
- To register by credit card, visit our website at www.sefapp.org and click on "Events".

**Attachment, Perversion, Play and Involvement: Film Screening and Discussion of "An Affair of Love"
Sunday, December 7th, 2014**

Name: _____

Address: _____

City,State,Zip: _____

E-mail: _____

License #/Type: _____

*Refund Policy – Refunds will be made upon written request until the day of the event.
No refunds will be made after the event date.*

- Professional Members - \$35
- Early Career Members - \$25
- Non-Members - \$50
- Student SEFAPP Members – FREE (register online at www.sefapp.org)
- Student Non-Members - \$10 (copy of current student ID required)

If you would like to **join or renew your SEFAPP Membership** and register for the symposium please mark this box and add **\$90** (*\$60 for Early Career professionals, \$30 for students with copy of ID*).

TOTAL ENCLOSED \$ _____
Brunch Included in Fee

Make your check out to SEFAPP