

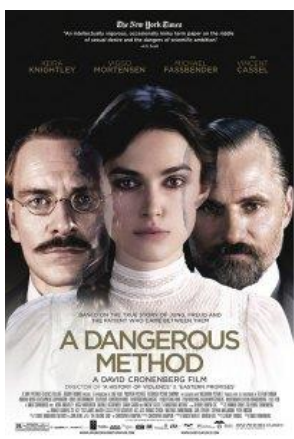


SEFAPP At The Movies Presents “A Dangerous Method”

PRESENTED BY DONNA BENTOLILA, LCSW, PH.D.

WHEN: SUNDAY, OCTOBER 20, 2013
TIME: 8:30am to 12:30pm, followed by brunch
WHERE: Home of Barbara Lurie, Ph.D., LMFT
Delaire Country Club
4700 Cherry Laurel Lane
Delray Beach, FL33445

PRESENTATION DESCRIPTION: (INSTRUCTIONAL LEVEL: INTERMEDIATE)



The movie *A Dangerous Method* explores the fascinating history between two renowned male psychoanalysts and scientists, Carl G. Jung and Sigmund Freud, and Sabina Spielrein, the troubled and mysterious woman who entered each of their lives early on in their relationship. Dr. Bentolila will explore the life and work of Dr. Spielrein and how it was that she arrived to impact and make a mark in a psychoanalytic world dominated by men and their authority.

Located at the center of a triangle fashioned by passion, intellectual curiosity, intrigues, deceits and the drive for recognition, the story of this uniquely gifted and talented Russian woman reveals that she was able to shift from being a highly troubled psychiatric patient and become an inspirational muse to her treating physician, the dashing and talented Carl Gustav Jung.

Dr. Bentolila will explore how Spielrein was able to assume the role of a legitimate interlocutor to each of these men, the steps that led her to her recovery and her ideas and role during the early history of psychoanalysis. Dr. Bentolila will also explore Spielrein's ideas on the "destructive drive" and how it anticipated the future of each of these two giants. Beyond these questions, this program will also explore and ponder the role which the question of gender might have played in her case. We will discuss and explore as we trace her tragic yet fascinating life and the contributions she made to the psychoanalytic movement.

PRESENTER:



Donna Bentolila, L.C.S.W., Ph.D. is a Board Member, Faculty Member and Supervising Analyst of The Southeast Florida Institute for Psychoanalysis and Psychotherapy and President-Elect of the Southeast Florida Association for Psychoanalytic Psychotherapy. One of the founders of and a frequent presenter at the Lacanian Clinical Forum at Austen Riggs Hospital, Ms. Bentolila has published many papers on Lacan, the death drive and trauma. She practices psychoanalysis and psychotherapy in Boca Raton and Miami, Florida.

OBJECTIVES:

After attending this intermediate-level program in full, participants will be able to:

- (1) Describe the role of women, Sabina Spielrein in particular, in the early history of psychoanalysis.
- (2) Understand the role of transference and countertransference in any analytic setting as well as the need for analysts to analyze the unconscious logic and determinants of their desire.
- (3) Understand the theoretical merits of the "destructive" or "death-drive" for psychoanalytic theory and treatment.

REGISTRATION: *(see fees at bottom of page)*

- To register by check, complete form below and mail with your check made out to "SEFAPP" **no later than 10/17/13**.
- To register by credit card, visit our website at www.sefapp.org and click on "Events".
- RSVP by 10/17/13 at office@sefapp.org and pay by check or cash at the door.

LOCATION AND DIRECTIONS:

NOTE: THIS EVENT IS IN DR. LURIE'S HOME, NOT AT THE COUNTRY CLUB.

DIRECTIONS: From I-95 take the Linton Blvd. exit and head west for two miles. Turn left at Military Trail and continue south on Military Trail for approximately one mile until you reach Live Oak Boulevard. At Live Oak Boulevard, turn left into Delaire Country Club. After you pass through the gate, take your first left onto Cherry Laurel Lane. Follow road as it curves to the left. Dr. Lurie's house is the third one on the left.

CONTINUING EDUCATION CREDITS:

SEFAPP is an approved continuing education provider by the Agency for Health Care Administration of the Florida Board of Clinical Social Work, Marriage and Family Therapy and Mental Health Counseling (BAP #587 EXP. 3/2014). **This program, when attended in its entirety, is offered for 3 CE credits.** Division 39 is approved by the American Psychological Association to sponsor continuing education for psychologists. Division 39 maintains responsibility for this program and its content. Division 39 is committed to accessibility and non-discrimination in its continuing education activities. SEFAPP and Division 39 are committed to conducting all activities in conformity with the American Psychological Association's Ethical Principles for Psychologists. Participants are asked to be aware of the need for privacy and confidentiality throughout the program. If participants have special needs, we will attempt to accommodate them. Please address questions, concerns and any complaints to Lisa Schulman, Ph.D. at (561) 844-1050.

The risks, utility and limitations of this treatment will be covered during the talk. The presenters are not receiving commercial support, nor representing any commercial interest or recommending any commercial product in relation to their presentation.

SEFAPP At the Movies Presents "A Dangerous Method" - Sunday, October 20, 2013

Name: _____

Address: _____

City, State, Zip: _____

E-mail: _____

License #/Type: _____

*Refund Policy - Refunds will be made upon written request until 10/20/13.
No refunds will be made after 10/20/13.*

REGISTER or RSVP BY 10/17/13

- Current SEFAPP Members - \$35
- Non-Members - \$50
- Student SEFAPP Members – FREE (register online at www.sefapp.org)
- Student Non-Members - \$10 (copy of current student ID required)
- If you would like to **join or renew your SEFAPP Membership** and register for the conference please mark this box and add **\$90 (\$30 for students with copy of ID)**.

TOTAL ENCLOSED \$ _____

Brunch Included in Fee

Please make your check payable to **SEFAPP** and send it with this form to:

SEFAPP c/o Cristina Virsida, Administrator
101 Mint Hill Drive, Cary, NC 27519